

# THE PLATINUM PACKAGING GROUP

## PLAT*Machinery*

### TS600

#### Automatic Label Applicator Head

The ST600 Automatic Label Applicator is a high performance labeling head capable of speeds of up to 600 linear inches per minute. It comes complete with a direct drive DC stepper motor, powered rewind, a 4.5-inch web width and a standard 12-inch diameter label roll capacity. Under micro-processor control, the TS600 is accurate to  $\pm 1/32$  of an inch.

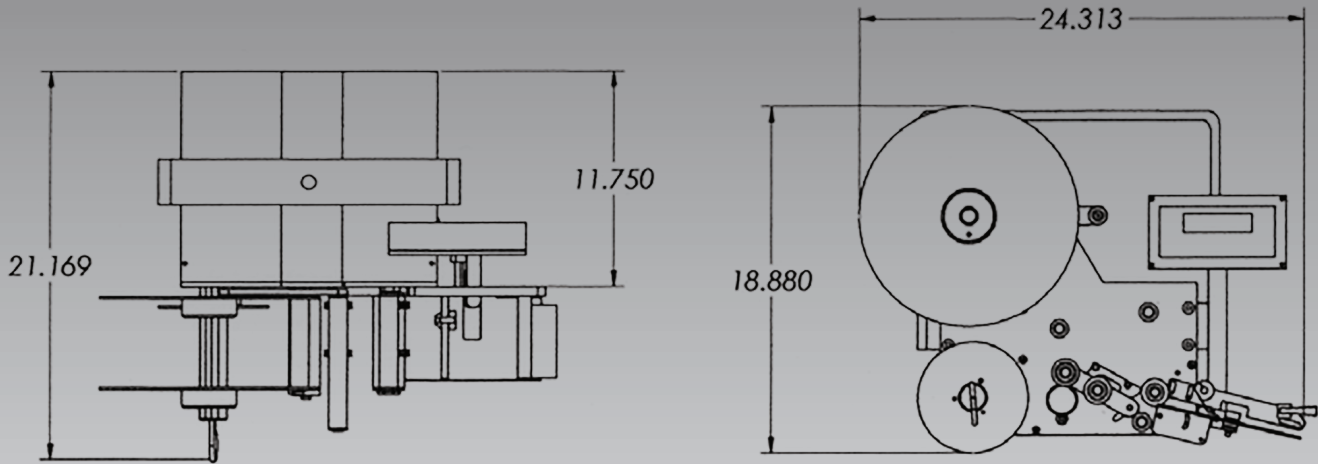


- Heavy duty construction specifically designed for industrial applications.
- Microprocessor controller gives flexible and accurate label placement.
- Stainless steel and anodized aluminum provide protection from corrosive environments.
- Solid drive construction ensures even pressure to the label web resulting
- The applicator head can be oriented to any attitude for side top or bottom placement.
- Handles a full assortment of label shapes and sizes.
- Available in Wipe-On and Tamp-Blow Versions.
- 50 memory presets for fast product change over and setup.

# THE PLATINUM PACKAGING GROUP

## PLAT *Machinery*

### TS600 Automatic Label Applicator Head



#### TS600 Label Applicator Specifications

<b>Speed</b>	<i>600 linear inches per minute.</i>
<b>Accuracy</b>	<i>± 1/32 of an inch with consistent product dimensions</i>
<b>Control Electronics</b>	<i>Microprocessor Controller</i>
<b>Label Size</b>	<i>Minimum: Wipe-On: 1/2" by 1"; Tamp or Blow-On: 1" by 1" Maximum: Wipe-On: 4-1/2" by 12"; Tamp or Blow-On: 4-1/2" by 6"</i>
<b>Electrical</b>	<i>115 VAC, 50/60 Hertz, 5 Amps</i>
<b>Product Detection</b>	<i>Photoelectric</i>
<b>Label Capacity</b>	<i>4.5" web width, 12" diameter label roll, 3" core</i>
<b>Options</b>	<i>Low Label Warning Out of Label Warning Web Break Warning Label/Product Counter Clear Label Sensor Oversize Web Width Three Stage Light Pole</i>

**THE PLATINUM PACKAGING GROUP**

tel: (562) 630-6700

7627 Somerset Blvd., Paramount, CA 90723

sales@platinumpkggroup.com