

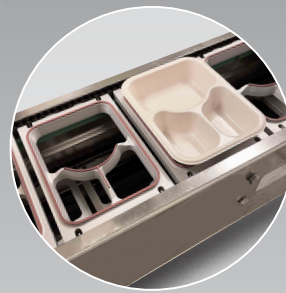
THE PLATINUM PACKAGING GROUP

PLAT*Machinery* Tray Sealers



Series HSI

Heat Sealing Intermittent Tray Sealer



Applications

Fresh, Frozen Prepared Foods

Style

Intermittent Platen Head

Film Types

PET Lidding Films

Technical Specifications

PLATEN Head Intermittent Motion (Adjustable Speed)

Portable Casters

Overall Length 78"
Height 47" / Width 23"
Infeed Length 28" Approx.

Performance

Up to 27 Pks Per Min.

Weight 400 lbs.

Utility 110/120 6 Amps,
60 Hz Volts No Air Needed

Packaging Specifications

Straight Cut

Simple to use / Easy to Clean

Roll Diameter 9' Max.

Can Run Paper or Plastic

Max Packaging Size
8 3/4" in Width / Dept 3 1/4"

Key Features

Stainless Steel Construction

Anodized Aluminum Parts

Automated Discharge with
Lexan Safety Guard

Removable Carriers

Max Cycle Speed up to 10
to 27 Per Minute

For Use in Room
Temperature Environment

Series HSI

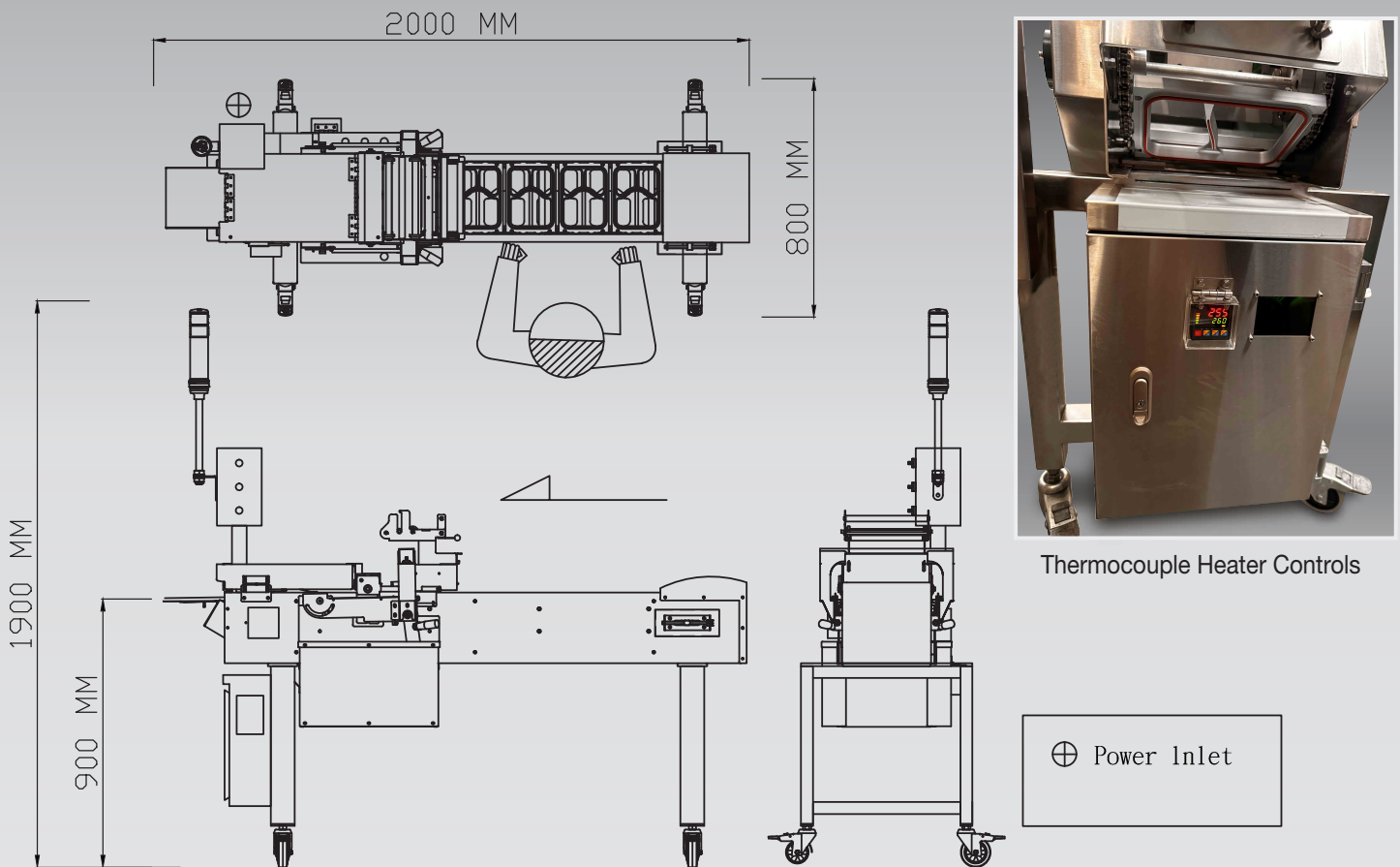
Heat Sealing Intermittent Tray Sealer

Overview

The HSI Series is our most compact automatic tray sealer, packing performance into a small foot print. This model is ideal for applications requiring high output from a small physical space.

The HSI accommodates film widths up to 8.75". This versatile tray sealer handles a wide range of container sizes with the interchangeable tray carriers. The tool-free, quick change tray pallets are manufactured from 1/2" aluminum plate! The seal temperature is continually monitored by a thermocouple and consistent temperature is maintained with a solid state controller.

Casters and a 110-volt electrical supply make the HSI portable and flexible in operating the machine in a convenient location. The stainless steel and aluminum construction is ideal for strict sanitary applications.



Capable
Of Running



Ovenable Compostable Trays



Ovenable Plastic Recyclable CPET Trays



Recyclable PET Cold Pack Trays



Recyclable Portion Cups

THE PLATINUM PACKAGING GROUP

tel: (562) 630-6700

7627 Somerset Blvd., Paramount, CA 90723

sales@platinumpkggroup.com